

LEV 110 - 130 P



Categories: [Wide Belt Sanding Machines](#)

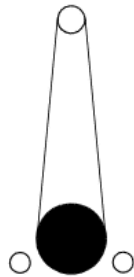


WIDE BELT SANDING MACHINE LEV 110P - LEV 130P

TECHNICAL DATA

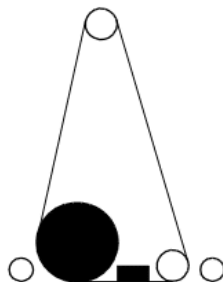
	LEV 110P	LEV 130P
Working width	mm 1100	mm 1350
Sanding Belts size	mm 1120x2150 on request: mm 1120x2650	mm 1370x2150 on request: mm 1370x2650
Max working height	mm 160	mm 160
1st sanding belt speed	m/sec 18	m/sec 18
2nd sanding belt speed	m/sec 16	m/sec 16
3rd sanding belt speed	m/sec 14	m/sec 14
Motor power	HP 0,75	HP 0,75
Feed speed	m/1' 4-20	m/1' 4-20
Working table lifting motor power	HP 0,33	HP 0,33

Available Versions:



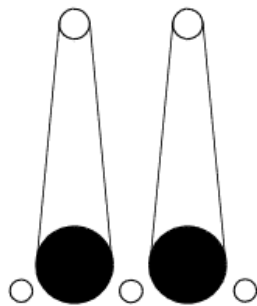
LEV 130P R CE version

- 1 Belt
- 1 Rubber coated roller (85 SH) with helical grooves \varnothing 220 mm
- Motor HP 15
- Variable feed speed motor power HP 0,75
- 1 Dust extraction hood \varnothing 160 mm + 2 \varnothing 80 mm



LEV 130P KRT CE version

- 1 Belt - roller/pad combined unit
- 1 Rubber coated roller (85 SH) with helical grooves \varnothing 180 mm
- Finishing pad 50 mm
- Motor HP 15
- Variable feed speed motor power HP 0,75
- 1 Dust extraction hood \varnothing 160 mm + 2 \varnothing 80 mm

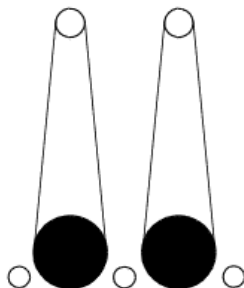


LEV 110P RR CE version

- Belts - roller / roller
- 1st rubber coated roller (85 SH) with helical grooves \varnothing 220 mm
- 2nd rubber coated roller (40 SH) with helical grooves \varnothing 220 mm
- Motor HP 20
- Variable feed speed motor power HP 0,75
- 2 Dust extraction hoods \varnothing 160 mm + 2 \varnothing 80 mm

Extra for version with:

- 1st roller \varnothing 180 mm and 2nd roller \varnothing 320 mm
- 1st roller \varnothing 250 mm and 2nd roller \varnothing 250 mm
- 1st roller \varnothing 320 mm and 2nd roller \varnothing 320 mm



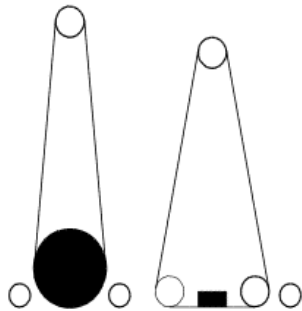
LEV 130P RR CE version

- 2 Belts - roller / roller
- 1st rubber coated roller (85 SH) with helical grooves \varnothing 220 mm

- 2nd rubber coated roller (40 SH) with helical grooves \varnothing 220 mm
- Motor HP 20
- Variable feed speed motor power HP 0,75
- 2 Dust extraction hoods \varnothing 160 mm + 2 \varnothing 80 mm

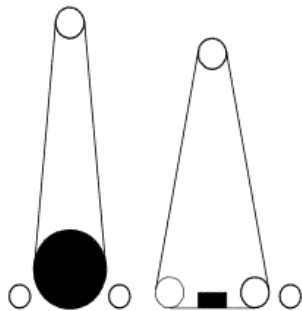
Extra for version with:

- 1st roller \varnothing 220 mm and 2nd roller \varnothing 220 mm
- 1st roller \varnothing 180 mm and 2nd roller \varnothing 250 mm
- 1st roller \varnothing 180 mm and 2nd roller \varnothing 320 mm
- 1st roller \varnothing 250 mm and 2nd roller \varnothing 250 mm
- 1st roller \varnothing 320 mm and 2nd roller \varnothing 320 mm



LEV 110P RT CE version

- 2 Belts - roller / pad
- 1st rubber coated roller (85 SH) con with helical grooves \varnothing 220 mm
- 2nd finishing pad 50 mm
- Motor HP 20
- Variable feed speed motor power HP 0,75
- 2 Dust extraction hoods \varnothing 160 mm + 2 \varnothing 80 mm

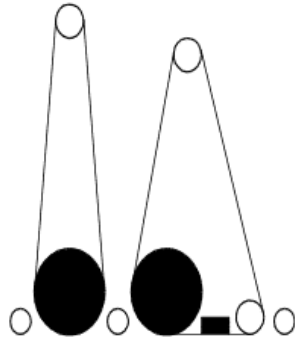


LEV 130P RT CE version

- 2 Belts - roller / pad
- 1st rubber coated roller (85 SH) con with helical grooves \varnothing 220 mm

- 2nd finishing pad 50 mm
- Motor HP 20
- Variable feed speed motor power HP 0,75
- 2 Dust extraction hoods \varnothing 160 mm + 2 \varnothing 80 mm

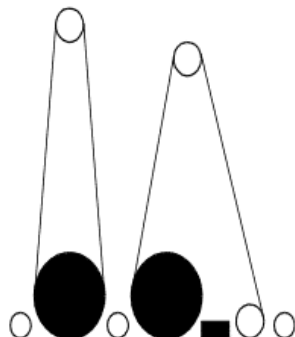
Extra for version with 1st roller \varnothing 220 mm



LEV 110P RKRT CE version

- 2 Belts - roller / roller-pad combined unit
- 1st rubber coated roller (85 SH) with helical grooves \varnothing 180 mm
- 2nd combined unit
 - Rubber coated roller (40 SH) with helical grooves \varnothing 180 mm
 - Finishing pad 50 mm
- Motor HP 20
- Variable feed speed motor power HP 0,75
- 2 Dust extraction hoods \varnothing 160 mm + 2 \varnothing 80 mm

Extra for version with 1st roller \varnothing 320 mm

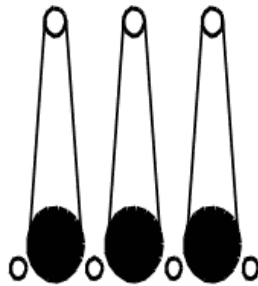


LEV 130P RKRT CE version

- 2 Belts - roller / roller-pad combined unit
- 1st rubber coated roller (85 SH) with helical grooves \varnothing 180 mm
- 2nd combined unit

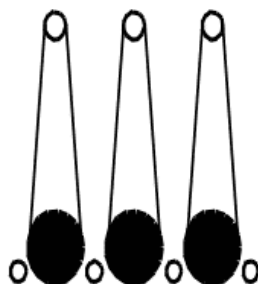
- Rubber coated roller (40 SH) with helical grooves \varnothing 180 mm
- Finishing pad 50 mm
- Motor HP 20
- Variable feed speed motor power HP 0,75
- 2 Dust extraction hoods \varnothing 160 mm + 2 \varnothing 80 mm

Extra for version with 1st roller \varnothing 320 mm



LEV 110P RRR CE version

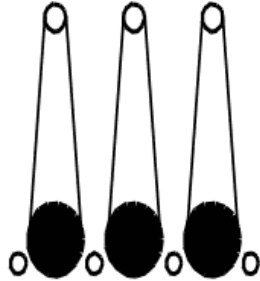
- 3 Belts - roller / roller / roller
- 1st rubber coated roller (85 SH) with helical grooves \varnothing 220 mm
- 2nd rubber coated roller (hardness on request) with helical grooves \varnothing 220mm
- 3rd rubber coated roller (hardness on request) with helical grooves \varnothing 220mm
- 1st belt motor HP 20
- 2nd/3rd belt motor HP 20
- Variable feed speed motor power HP 0,75
- 3 Dust extraction hoods \varnothing 160 mm + 2 \varnothing 80 mm



LEV 130P RRR CE version

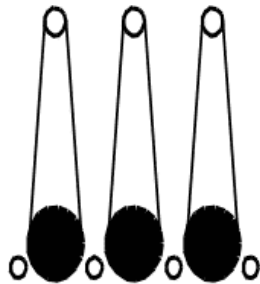
- 3 Belts - roller / roller / roller
- 1st rubber coated roller (85 SH) with helical grooves \varnothing 220 mm
- 2nd rubber coated roller (hardness on request) with helical grooves \varnothing 220mm
- 3rd rubber coated roller (hardness on request) with helical grooves \varnothing 220mm
- 1st belt motor HP 20
- 2nd/3rd belt motor HP 20

- Variable feed speed motor power HP 0,75
 - 3 Dust extraction hoods \varnothing 160 mm + 2 \varnothing 80 mm
-



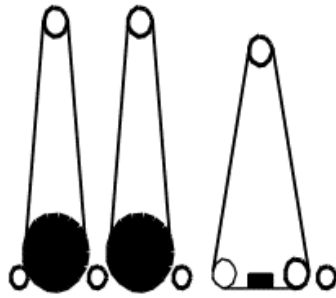
LEV 110P RRR CE version

- 3 Belts - roller / roller / roller
 - 1st rubber coated roller (85 SH) with helical grooves \varnothing 180 mm
 - 2nd rubber coated roller (hardness on request) with helical grooves \varnothing 220mm
 - 3rd rubber coated roller (hardness on request) with helical grooves \varnothing 320mm
 - 1st belt motor HP 20
 - 2nd/3rd belt motor HP 20
 - Variable feed speed motor power HP 0,75
 - 3 Dust extraction hoods \varnothing 160 mm + 2 \varnothing 80 mm
-

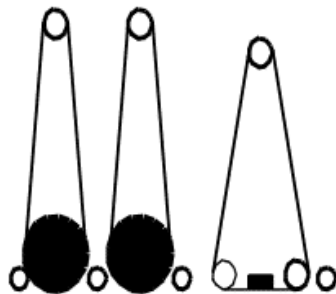


LEV 130P RRR CE version

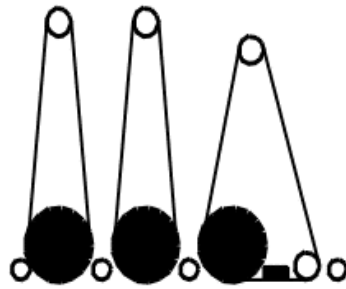
- 3 Belts - roller / roller / roller
 - 1st rubber coated roller (85 SH) with helical grooves \varnothing 180 mm
 - 2nd rubber coated roller (hardness on request) with helical grooves \varnothing 220mm
 - 3rd rubber coated roller (hardness on request) with helical grooves \varnothing 320mm
 - 1st belt motor HP 20
 - 2nd/3rd belt motor HP 20
 - Variable feed speed motor power HP 0,75
 - 3 Dust extraction hoods \varnothing 160 mm + 2 \varnothing 80 mm
-

**LEV 110P RRT CE version**

- 3 Belts - roller / roller / roller
 - 1st rubber coated roller (85 SH) with helical grooves \varnothing 180 mm
 - 2nd rubber coated roller (40 SH) with helical grooves \varnothing 220 mm
 - 3rd finishing pad 50 mm
 - 1st belt motor HP 20
 - 2nd/3rd belt motor HP 20
 - Variable feed speed motor power HP 0,75
 - 3 Dust extraction hoods \varnothing 160 mm + 2 \varnothing 80 mm
-

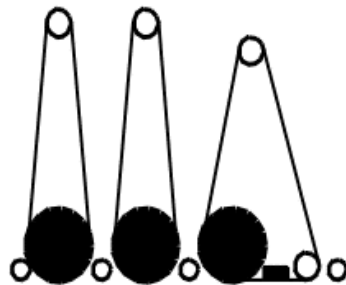
**LEV 130P RRT CE version**

- 3 Belts - roller / roller / roller
 - 1st rubber coated roller (85 SH) with helical grooves \varnothing 180 mm
 - 2nd rubber coated roller (40 SH) with helical grooves \varnothing 220 mm
 - 3rd finishing pad 50 mm
 - 1st belt motor HP 20
 - 2nd/3rd belt motor HP 20
 - Variable feed speed motor power HP 0,75
 - 3 Dust extraction hoods \varnothing 160 mm + 2 \varnothing 80 mm
-



LEV 110P RRKRT CE version

- 3 Belts - roller / roller / roller-pad combined unit
 - 1st rubber coated roller (85 SH) with helical grooves \varnothing 180 mm
 - 2nd rubber coated roller (hardness on request) with helical grooves \varnothing 180mm
 - 3rd combined unit:
 - Rubber coated roller (hardness on request) with helical grooves \varnothing 180mm
 - Finishing pad 50 mm
 - 1st belt motor HP 20
 - 2nd/3rd belt motor HP 20
 - Variable feed speed motor power HP 0,75
 - 3 Dust extraction hoods \varnothing 160 mm + 2 \varnothing 80 mm
-



LEV 130P RRKRT CE version

- 3 Belts - roller / roller / roller-pad combined unit
- 1st rubber coated roller (85 SH) with helical grooves \varnothing 180 mm
- 2nd rubber coated roller (hardness on request) with helical grooves \varnothing 180mm
- 3rd combined unit:
 - Rubber coated roller (hardness on request) with helical grooves \varnothing 180mm
 - Finishing pad 50 mm
- 1st belt motor HP 20
- 2nd/3rd belt motor HP 20
- Variable feed speed motor power HP 0,75
- 3 Dust extraction hoods \varnothing 160 mm + 2 \varnothing 80 mm

CE EQUIPMENT

- Self centering of the sanding belts by the Eco Gear system our patent
- Belt rotation fast stop brake
- Oscillating tensioning roller
- Rubber coated pressure rollers
- Safety bar
- Electronic digital readout of work piece thickness
- Nr.2 infeed and nr.2 outfeed table rollers
- Automatic table positioning
- Automatic centering of the mat
- Check Control (3 belts version included)
- Automatic rollers exclusion