

LEV 65



Categories: [Wide Belt Sanding Machines](#)

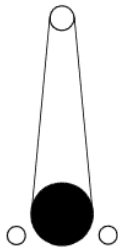


WIDE BELT SANDING MACHINE LEV 65

TECHNICAL DATA

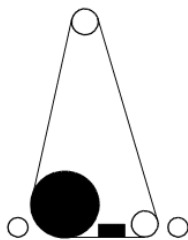
Working width	mm 650
Sanding Belts size	mm 670x2150
Max working height	mm 160
1st sanding belt speed	m/sec 18
2nd sanding belt speed	m/sec 16
Motor power	HP 0,75
Feed speed	m/1' 4-20
Working table lifting motor power	HP 0,33

Available versions:



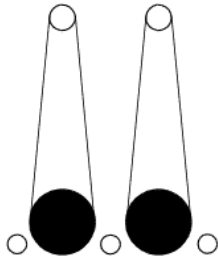
LEV 65 R CE version

- 1 Belt
- 1 Rubber coated roller (85 SH) with helical grooves \varnothing 220 mm
- Motor HP 10
- 1 Dust suction hood \varnothing 160 mm

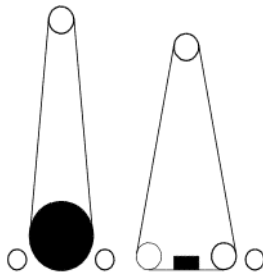


LEV 65 KRT CE version

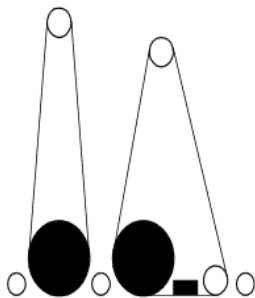
- 1 Belt - Roller-pad combined unit
- 1 Steel roller with helical grooves \varnothing 150 mm
- Finishing pad 50 mm
- Motor HP 10
- 1 Dust suction hood \varnothing 160 mm

**LEV 65 RR CE version**

- 2 Belts - roller / roller
- 1st Steel roller with helical grooves \varnothing 150 mm
- 2nd Rubber coated roller (40 SH) with helical grooves \varnothing 150 mm
- Motor HP 15
- 2 Dust suction hoods \varnothing 160 mm

**LEV 65 RT CE version**

- 2 Belts - roller / pad
- 1st Steel roller with helical grooves \varnothing 150 mm
- 2nd Finishing pad 50 mm
- Motor HP 15
- 2 Dust suction hoods \varnothing 160 mm

**LEV 65 RKRT CE version**

- 2 Belts - roller / roller-pad combined unit

- 1st Steel roller with helical grooves \varnothing 150 mm
- 2nd combined unit
 - rubber coated roller (40 SH) with helical grooves \varnothing 150 mm
 - finishing pad 50 mm
- Motor HP 15
- 2 Dust suction hoods \varnothing 160 mm

CE EQUIPMENT

- Self centering of the sanding belts by the Eco Gear system our patent
- Belt rotation fast stop brake
- Oscillating tensioning roller
- Rubber coated pressure rollers
- Safety bar
- Electronic digital readout of work piece thickness
- Nr.2 infeed and nr.2 outfeed table rollers
- Automatic table positioning